

# GOLDEN COUNTRY

## ORIENTAL FOOD

2355 S. Blue Island Ave. Chicago, IL, 60608 | Tel: (773)847-1700 | Fax: (773)847-1717 | store.goldencountry.com

### Product Specification Sheet

<b>Mae Ploy® Green Curry Paste</b>	
G/C #: B453315	
Item UPC #: 044738201957	
Case UPC #: 20044738201951	
<b>PRODUCT INFORMATION:</b>	No MSG. No preservative. No artificial color. Halal certified. Blended with green chili and spices with shrimp paste. Packed in PE plastic tub. Produced by Theppadungporn Coconut Co. Ltd. In Thailand.
<b>PRODUCT OF</b>	<b>THAILAND</b>
<b>PACK SIZE (UNIT/CS):</b>	12 <b>UNIT SIZE (NET WEIGHT):</b> 35 oz.
<b>CASE GROSS WEIGHT (LB.):</b>	29.76
<b>CASE DIMENSION (In.):</b>	14.76 x 10.04 x 10.04 <b>PALLET (Ti x Hi):</b> 10 x 5
<b>SHELF LIFE &amp; STORAGE:</b>	2 years (unopened) when properly stored in room temperature. Avoid direct sunlight. Refrigerate after opening and use within 6 months.



#### **NUTRITION INFORMATION:**

<b>Serving Size:</b>	100g	
<b>Serving Per Container about:</b>		
<b>Amount Per Serving</b>	<b>97</b>	
<b>Calories</b>		
<b>Calories from Fat</b>	9.9	
	% Daily Value*	
<b>Total Fat (g)</b>	1.1	1.69%
<b>Saturated Fat (g)</b>	0.24	1.20%
<b>Trans Fat (g)</b>	0	
<b>Polyunsaturated Fat</b>		
<b>Monounsaturated Fat</b>		
<b>Cholesterol (mg)</b>	12.59	4.20%
<b>Sodium (mg)</b>	6137.72	255.74%
<b>Total Carbohydrate (g)</b>	17.31	5.77%
<b>Dietary Fiber (g)</b>	10.89	43.56%
<b>Sugar (g)</b>	3.03	
<b>Added Sugar (g)</b>		
<b>Protein (g)</b>	4.49	
<b>Potassium (mg)</b>		
<b>Vitamin A (IU)</b>	0%	
<b>Vitamin C (mg)</b>	5.03	8%
<b>Calcium (mg)</b>	88.64	9%
<b>Iron (mg)</b>	1.58	9%

#### **INGREDIENTS:**

GARLIC (18.5%), GREEN CHILI (31%), LEMONGRASS (21%), SALT (12.5%), GALANGAL (8.5%), KAFFIR LIME PEEL (2.0%), CORIANDER SEED (1%), CUMIN (0.5%), TURMERIC (0.5%), PEPPER (0.5%). SHRIMP PASTE [SHRIMP (80%), SALT (20%)](4%).

#### **ALLERGEN INFORMATION:**

CONTAINS SHRIMP. MAY CONTAINS TRACES OF FISH.  
SEE ATTACHMENT FOR DETAIL.

#### **Additional Information:**

##### **Physical Spec:**

APPEARANCE: Thick - Paste  
COLOUR: Green - brown  
FLAVOUR: Spicy aroma

##### **Chemical Spec:**

SALT: ( Titration ) 13.5 - 15.5  
MOISTURE ( Moisture balance ): 59.0 - 62.0  
Aw VALUE ( Aw analyzer ): ≤ 0.840

##### **Microbiological Spec:**

Yeast & Mold: ≤100 cfu / g | E.coli: <3 MPN / g  
Bacillus cereus: ≤ 1,000 cfu/g | Clostridium perfringens: ≤ 1,000 cfu/g  
Staphylococcus aureus: ND/0.1g | Salmonella spp: ND / 25 gSize

##### **Packaging Materials:**

Primary: K-Nylon-LLDPE | Secondary: PE plastic pail

##### **Heavy Metal Spec:**

Tin: < 250 ppm | Zinc: < 100 ppm | Copper: < 20 ppm | Lead: < 0.3 ppm  
Arsenic: < 2 ppm | Mercury: < 0.02 ppm | Cadmium: < 0.1 ppm

\* Percent Daily Values are based on a 2000 calories diet for adults children over 4 years old.

>>Product image/labeling shown on this spec sheet may vary from the actual product in the future.

© 2019 GOLDEN COUNTRY ORIENTAL FOOD LLC.

## Mae Ploy® Green Curry Paste Specification

**Pesticide Residue complied with Codex MRLs**

- Carbamate group
- Organochlorine Group
- Organophosphate Group
- Pyrethroide Group

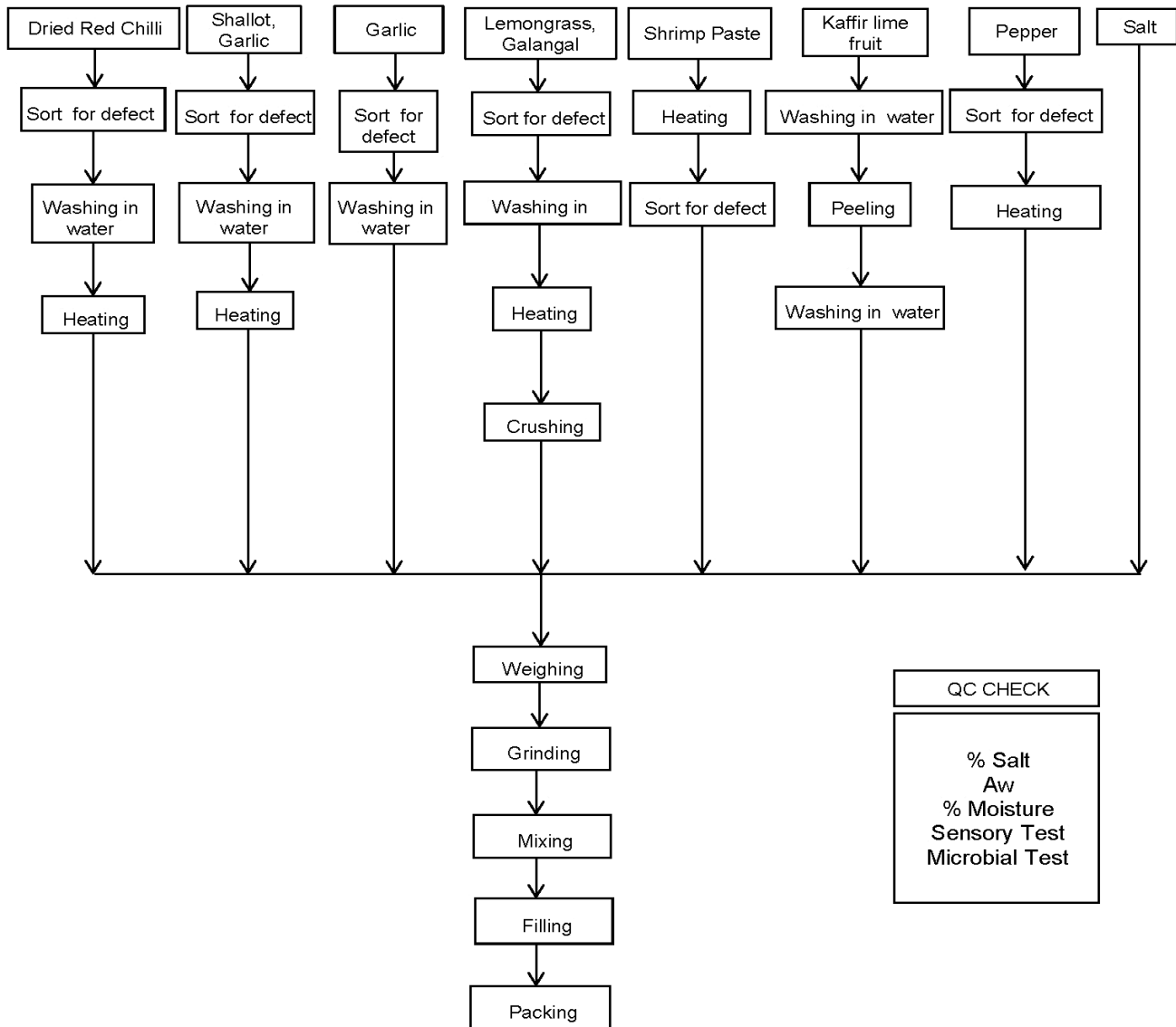
**Others:**

- Aflatoxin (sum of B1 B2 G1 G2): < 10 ppb
- Aflatoxin (B1): < 5 ppb
- Ochratoxin A: < 15 ppb
- Sudan I-IV: Not Detected

**GM Status:**

This product does not contain any genetically modified organisms.

**Flow Chart:**



\* Percent Daily Values are based on a 2000 calories diet for adults children over 4 years old.

>>Product image/labeling shown on this spec sheet may vary from the actual product in the future.

**ALLERGEN CHECK LIST FOR GREEN CURRY PASTE**

Component	Column I Present in the product	Column II Present in other products manufactured on the same line	Column III Present in the same manufacturing plant
Milk or its derivatives	No	No	No
Eggs or its derivatives	No	No	No
Fish or its derivatives, e.g., fish protein and extracts etc.	Yes (may contaminated from shrimp paste)	Yes (may contaminated from shrimp paste)	Yes Fish sauce
Crustacean shell fish or its derivatives	Yes (shrimp paste)	Yes (shrimp paste, shrimp)	Yes (shrimp paste, shrimp)
Tree nut (almonds, Brazil nuts, cashews, hazelnuts(filberts), macadamia nuts, pecans, pine nuts (pinyon, pinon), pistachios and walnutsor their derivatives	No	No	No
Peanut or its derivatives	No	No	Yes
Cereals containing gluten e.g. wheat or its derivatives	No	No	Yes (wheat from soysauce )
soy bean or its derivatives	No	Yes (fermented soy paste)	Yes (fermented soy paste ,HVP,soysauce)
Sulfurdioxide and Sulphite (≥ 10 ppm)	No	No	Yes
sesame seeds or its derivatives	No	No	No
Mustard / Mustard seeds or its derivatives	No	Yes (Black Mustard Seeds)	Yes (Black Mustard Seeds)
Lupin or its derivatives	No	No	No
celeary or its derivatives	No	No	No
beef or its derivatives	No	No	No
pork or its derivatives	No	No	No
chicken or its derivatives	No	No	Yes
royal jelly or its derivatives	No	No	No
bee pollen or propolis	No	No	No
gelatine eg. bee pollen, propolis or its derivatives	No	No	No
buck wheat or its derivatives	No	No	No
matsutake or its derivatives	No	No	No
oranges or its derivatives	No	No	No
kiwi or its derivatives	No	No	No
peachs or its derivatives	No	No	No
apples or its derivatives	No	No	No
yamanoimo (yams) or its derivatives	No	No	Yes
bananas or its derivatives	No	No	No
Coconut or its derivatives	No	Yes ( coconut sugar )	Yes ( coconut gel, coconut sugar )
Mango or its derivatives	No	No	Yes (mango in syrup)
Tomato or its derivatives	No	No	Yes