



2355 S. Blue Island Ave. Chicago, IL, 60608 | Tel: (773)847-1700 | Fax: (773)847-1717

Product Specification Sheet	
WOOMTREE® BREAD CRUMBS UPC #: 738055130389 G/C #: J130380	
PRODUCT INFORMATION:	Woomtree break crumbs panko.
PRODUCT OF	KOREA
PACK SIZE:	10 UNITS/CASE
UNIT SIZE:	1 KG.
CASE WEIGHT:	26.5 LBS.
CASE DIMENSION:	17.7 x 12.2 x 12.8
SHELF LIFE:	2 years. Store in cool dry place.



NUTRITION INFORMATION:

Serving Size:	30g	
Serving Per Container about:	33	
Amount Per Serving		
Calories	110	
Calories from Fat	9	
	% Daily Value*	
Total Fat	1g	2%
Saturated Fat	0g	0%
Trans Fat	0g	0%
Polyunsaturated Fat		
Monounsaturated Fat		
Cholesterol	0mg	0%
Sodium	34mg	2%
Total Carbohydrate	23g	8%
Dietary Fiber	0g	0%
Sugar	0g	
Protein	4g	
Protassium		
Vitamin A		0%
Vitamin C		0%
Calcium		1%
Iron		0%

INGREDIENTS:

WHEAT FLOUR, GLUCOSE, YEAST FOOD, PALM OIL, SALT

ALLERGEN INFORMATION:

CONTAINS WHEAT

* Percent Daily Values are based on a 2000 calories diet.

GOLDEN COUNTRY ORIENTAL FOOD

2355 S. Blue Island Ave. Chicago, IL, 60608 | Tel: (773)847-1700 | Fax: (773)847-1717 | www.goldencountry.com

Product Specification Sheet

Huy Fong® Sriracha Hot Chili Sauce			
G/C #: G087440			
Item UPC #: 024463061163			
Case UPC #: 0024463101166			
PRODUCT INFORMATION:	Fresh red chili peppers pureed in its own juices and seeds, with garlic flavoring. Made by Huy Fong Foods, Inc. in California, USA.		
COUNTRY OF ORIGIN:	CHINA		
PACK SIZE (UNIT/CS):	12	UNIT SIZE (NET WEIGHT):	28 oz.
CASE GROSS WEIGHT (LB.):	25		
CASE DIMENSION (In.):	12.44 x 9.44 x 9.75	PALLET (TI X HI):	15 x 6
SHELF LIFE & STORAGE:	24 months when properly stored in a cool dry place. Refrigeration is recommended after opening.		



NUTRITION INFORMATION:

Serving Per Container		
Service Size:	100g	
Amount Per Serving		
Calories	80	
Calories from Fat		
	% Daily Value*	
Total Fat (g)	0.5	0.64%
Saturated Fat (g)	0	0.00%
Trans Fat (g)	0	
Polyunsaturated Fat		
Monounsaturated Fat		
Cholesterol (mg)	0	0.00%
Sodium (mg)	1480	64.35%
Total Carbohydrate (g)	16	5.33%
Dietary Fiber (g)	3	10.71%
Sugar (g)	9	
Includes Added Sugar (g)	6	12.00%
Protein (g)	2	
Potassium (mg)	338	7.19%
Vitamin D (mcg)	0	0.00%
Vitamin C (mg)		0.00%
Calcium (mg)	22	1.69%
Iron (mg)	3	16.67%

INGREDIENTS:

CHILI, SUGAR, SALT, GARLIC, DISTILLED VINEGAR, POTASSIUM SORBATE AND SODIUM BISULFITE AS PRESERVATIVES, XANTHAN GUM.

ALLERGEN INFORMATION:

CONTAINS SULPHITE (SODIUM BISULFITE)

Additional Information:

See attachment.

* Percent Daily Values are based on a 2000 calories diet for adults and children over 4 years old.

>>Product image/labeling shown on this spec sheet may vary from the actual product in the future.

PRODUCT INFORMATION

SRIRACHA CHILI SAUCE
(Tuong Ot Sriracha)

Place of Manufac

Irwindale, Californ

Product Description

Fresh red chili peppers pureed in its own juices and seeds, with garlic flavoring.

Appearance

Red chili pepper sauce*

Aroma & Taste

Spicy, ground chili peppers with garlic aroma and flavor, slightly acidic, slightly sweet*

Consistency

Smooth, slightly thick sauce*

*COLOR, HEAT, AND CONSISTENCY MAY VARY

Ingredients

Chili, Sugar, Salt, Garlic, Distilled Vinegar, Potassium Sorbate and Sodium Bisulfite as preservatives, Xanthan Gum

CONTAINS SULPHITE

Typical Analysis

pH range around 4.0

Storage

Recommended storage refrigerated.

Expected Shelf Life

24 months from month of manufacture. Best before date can be found on the bottle.

Packing & Weights



G087455



G087450



G087440



G087448

Product No	Individual / Case UPC	Pack Size	Length x Width x Height (Inches)	Cubic Ft.	Cases / Tier	Tiers / Pallet	Cases / Pallet	Gross Weight	Net Weight	Total Pallet Weight*
G087455	024463-062801 024463-012783	24/9oz. (255 g)(266 ml)	13-7/8 x 9-1/4 x 7-3/8	0.55	14	7	98	17 lbs.	16.5 lbs.	1,666 lbs.
	024463-062801 024463-978539	12/9 oz. (255 g)(266 ml)	9-3/16 x 7-1/16 x 7-3/16	0.27	23	8	184	9 lbs.	8.25 lbs.	1,656 lbs.
G087450	024463-061095 024463-101098	12/17 oz. (1lb. 1oz.)(482 g)(435 ml)	11-1/8 x 8-5/16 x 8-13/16	0.47	17	7	119	16 lbs.	14.5 lbs.	1,904 lbs.
G087440	024463-061163 024463-101166	12/28 oz. (1lb. 12oz.)(793 g)(740 ml)	12-13/16 x 9-9/16 x 9-13/16	0.70	15	7	105	25 lbs.	23.5 lbs.	2,625 lbs.
G087448	024463-061170 024463-101173	3/136 oz. (8.50 lbs.)(3.859 kg)(3.5 liters)	18-7/8 x 6-1/2 x 11-1/4	0.80	14	5	70	29 lbs.	24 lbs.	2,030 lbs.

*total pallet weight does not include weight of pallet, pallet's height is approximately 5"

**Product images are not in scale.

Lot Numbering S

The lot number is

Example: H6TJ1A

LOT NUMBER WILL ONLY BE DECIPHER WHEN REQUIRED BY HEALTH DEPARTMENT

Country of Origin (COO)

Huy Fong Foods, Inc. declares that the chili sauce products are manufactured at 4800 Azusa Canyon Road, Irwindale, California, U. S. A.

Certificate of Analysis (COA) / pH Report

Huy Fong Foods, Inc.'s products are not required to have COA. A pH report is available upon request by lot number.

GMO

Huy Fong Foods, Inc.'s products are not known to contain any material derived from GMO based on surveying our ingredient suppliers.

Gluten-free

Huy Fong Foods, Inc.'s products are gluten-free based on surveying our ingredient suppliers.

Sudan Red

Huy Fong Foods, Inc.'s do not add Sudan red dye in any of our products. All ingredients are listed on containers.

Kosher Status

Kosher certificate is available upon request.

MSDS/SDS

Huy Fong Foods, Inc.'s products are not required to have MSDS/SDS.

Letter of Guarantee

Huy Fong Foods, Inc. will only provide Letter of Guarantee to our direct customers.

Allergens Statement

Allergens	Present in Products and Plant	
	YES	NO
SULFITES (Sodium Bisulfite is considered as 'Food Additive') - includes sulfur dioxide, chemicals that list sulfite, and natural sources (from shrimp, wine, potatoes, etc.)	sodium bisulfite used as preservative	
WHEAT - hydrolyzed wheat protein, flour, gluten flour or other gluten containing products (may include some gums, proteins, or flavorings), starches, etc.		Vinegar is gluten-free per our supplier (only ingredient customers has asked about)
PEANUTS, PEANUT OIL, & PEANUT DERIVED ITEMS - peanut meal, flour and ground nuts, Szechwan sauce, Mandelona nuts (reformed peanuts), etc.		NO
SOYBEAN - soy powder, protein, oil, lecithin, tofu, etc.		NO
MILK & DAIRY PRODUCTS - whey, lactose, cheese, casein, spice carriers, milk, cream, etc.		NO
EGG & EGG PRODUCTS - liquid and powders, etc.		NO
FISH - surimi, pollack, cod, whitefish, etc.		NO
SHELLFISH (CRUSTACEANS & MOLLUSKS) - shrimp, lobster, rock lobster, crab, crayfish, clams, mussels, oysters, scallops, and bases made from these items.		NO
TREE NUTS - almonds, beechnuts, brazil nuts, nutmeg, cashews, chestnuts, coconuts, pine nuts, hickory, pistachio, macadamia, walnuts, hazelnuts/filberts, pecans, etc.		NO

Nutritional Information

Nutritional Facts available upon request.

GOLDEN COUNTRY ORIENTAL FOOD

2355 S. Blue Island Ave. Chicago, IL, 60608 | Tel: (773)847-1700 | Fax: (773)847-1717 | store.goldencountry.com

Product Specification Sheet

Garden Queen® Concentrate Cooking Tamarind	
G/C #: B087431	
Item UPC #: 8854657002540	
Case UPC #: 18854657002547	
PRODUCT INFORMATION:	No artificial color and flavor added. No additives. No GM (genetically modified) ingredients. Packed in HDPE bottle. Manufactured by Siam Worakit Food Import Export Ltd., Part in Thailand.
PRODUCT OF	THAILAND
PACK SIZE (UNIT/CS):	24
UNIT SIZE:	16 oz.
GROSS CASE WEIGHT (LB.):	28.61
CASE DIMENSION (In.):	18.3 x 13 x 5.7
PALLET (TI X HI):	8 x 8
SHELF LIFE & STORAGE:	2 years when properly stored in a cool dry place. Refrigerate after opening and use within 1 month.



NUTRITION INFORMATION:

Serving Size:	2 tbsp	(30g)
Serving Per Container about:	15	
Amount Per Serving		
Calories	20	
Calories from Fat	0	
	% Daily Value*	
Total Fat	0g	0%
Saturated Fat	0g	0%
Trans Fat	0g	
Polyunsaturated Fat		
Monounsaturated Fat		
Cholesterol	0mg	0%
Sodium	65mg	3%
Total Carbohydrate	5g	2%
Dietary Fiber	0g	0%
Sugar	2g	
Protein	0g	
Potassium	2%	
Vitamin A	3%	
Vitamin C	27%	
Calcium	1%	
Iron	4%	

* Percent Daily Values are based on a 2000 calories diet.

INGREDIENTS:

TAMARIND (80%), WATER (20%)

ALLERGEN INFORMATION:

CONTAINS NO ALLERGENS.
See attachment for detail.

Additional Information:

Product characteristics:

Appearance: brown viscous liquid.
Color: brown
Odor: natural tamarind aroma
Taste: sour and fruity flavor
Texture: thick and smooth viscous liquid

Chemical/Microbiological characteristics:

Total Plate Count: < 10 cfu/g
Yeasts: < 10 cfu/g
Mold: < 10 cfu/g
Coliform: < 3 mpn/g
pH: 2.27
Brix: 15.6

Lot No. Decode: XX-XXX-XX-XX-XX

XX-XXX-XX-XX-XX = Brand
XX-XXX-XX-XX-XX = Customer Name
XX-XXX-XX-XX-XX = Year of Production (Thai Calendar)
XX-XXX-XX-XX-XX = Month of Production
XX-XXX-XX-XX-XX = Day of Production

>>Product image/labeling shown on this spec sheet may differ from the actual product in the future.

FORMULAIRE	ALLERGEN AND SENSITIVE INGREDIENTS FORM	REFERENCE	PAGE
		DATE	1/1 VERSION

Column I indicates the allergens that may be found in the product, from addition or cross-contamination. Column II indicates the allergens present in other products that are run on the same equipment but at a different time. Column III indicates whether any allergens are present in the plant.

Component	Column I Present in the product	Column II Present in the other products manufactured on the same line	Column III Present in the same manufacturing establishment
Peanuts and derivatives (including peanut proteins, peanut oil and mandelonas)	No	No	No
Tree nuts (almonds, Brazil nuts, cashews, hazelnuts (filberts), macadamia nuts, pecans, pine nuts, pistachios and walnuts)	No	No	No
Sesame seeds and derivatives (e.g. sesame oil)	No	Yes	Yes
Milk and derivatives (e.g. milk caseinate, whey, etc.)	No	No	No
Eggs and egg products	No	No	No
Fish and fish products or derivatives	No	No	No
Crustaceans (e.g. crab, crayfish, lobster, shrimp) or shellfish (e.g. clams, mussels, oysters, scallops)	No	No	No
Soy and derivatives (e.g. soy oil)	No	Yes	Yes
Gluten (if yes, write the source (ex: wheat))	No	No	No
Sulphites	Naturally occurring (if yes, write the concentration)	No	No
	Added (if yes, write the concentration)	No	
Mustard – mustard seeds and derivatives	No	No	No
Coconut and derivatives	No	No	No
Monosodic glutamate (MSG)	No	Yes	Yes

Do you have effective procedures to avoid cross-contamination of the product with allergens not present in the product but noted in columns II and III? Cleaning program and Product schedule

If, for any reason, there are any modifications in this product, you are responsible for updating your records and notifying Golden Country immediately.

Signature: 

Supplier' contact name: Mr. Worapat Kho Date: May 14, 2019

GOLDEN COUNTRY ORIENTAL FOOD

2355 S. Blue Island Ave. Chicago, IL, 60608 | Tel: (773)847-1700 | Fax: (773)847-1717 | www.goldencountry.com

Product Specification Sheet	
Tasty Joy® Roasted Wasabi Coated Green Peas	
ITEM UPC : 738055218803	
G/C #: B218800	
PRODUCT INFORMATION:	Freshly roasted green peas are sprinkled with our unique blend of spices and hot wasabi. These green peas are great as snack or any occasion. Packed in a vaccum bag.
PRODUCT OF	THAILAND
PACK SIZE (UNIT/CS):	3
UNIT SIZE:	5 LBS
CASE WEIGHT (LB.):	16
CASE DIMENSION (In.):	12 x 11 x 9 PALLET (TI X HI): 13 x 4
SHELF LIFE & STORAGE:	2 years when properly stored in a cool dry place.



NUTRITION INFORMATION:

Serving Size:	1/3 cup	(30 g)
Serving Per Container about:	75	
Amount Per Serving		
Calories	130	
Calories from Fat	30	
	% Daily Value*	
Total Fat	3g	5%
Saturated Fat	0g	0%
Trans Fat	0g	0%
Polyunsaturated Fat		
Monounsaturated Fat		
Cholesterol	0mg	0%
Sodium	210mg	9%
Total Carbohydrate	20g	7%
Dietary Fiber	2g	8%
Sugar	16g	
Protein	5g	
Vitamin A	0%	
Vitamin C	0%	
Calcium	0%	
Iron	6%	

* Percent Daily Values are based on a 2000 calories diet.

INGREDIENTS:

GREEN PEAS, GLUTINOUS RICE FLOUR, WHEAT FLOUR, SUNFLOWER OIL, SUGAR, HORSERADISH, SALT, FD&C YELLOW #5, FD&C BLUE #1.

ALLERGEN INFORMATION:

Additional Information:



2355 S. Blue Island Ave. Chicago, IL, 60608 | Tel: (773)847-1700 | Fax: (773)847-1717

Product Specification Sheet

ASSI® DRIED KELP UPC #: 081652071051 G/C #: J157284		
PRODUCT INFORMATION:	100 % NATURAL KELP.	
PRODUCT OF	KOREA	
PACK SIZE:	50 UNITS/CASE	
UNIT SIZE:	2 OZ.	
CASE WEIGHT:	7 LBS.	
CASE DIMENSION:	17.5 X 12.5 X 9.5	
SHELF LIFE:	2 years. Store in cool dry place. Avoid direct sunlight.	

NUTRITION INFORMATION:

Serving Size:	0.3 OZ	(10g)
Serving Per Container about:	6	
Amount Per Serving		
Calories	25	
Calories from Fat	0	
	% Daily Value*	
Total Fat	0g	0%
Saturated Fat	0g	0%
Trans Fat	0g	0%
Polyunsaturated Fat		
Monounsaturated Fat		
Cholesterol	0mg	0%
Sodium	310mg	13%
Total Carbohydrate	5g	2%
Dietary Fiber	1g	4%
Sugar	1g	
Protein	1g	
Protassium		
Vitamin A		2%
Vitamin C		4%
Calcium		8%
Iron		4%

INGREDIENTS:

KELP

ALLERGEN INFORMATION:

--

* Percent Daily Values are based on a 2000 calories diet.



2355 S. Blue Island Ave. Chicago, IL, 60608 | Tel: (773)847-1700 | Fax: (773)847-1717

Product Specification Sheet

Wei Chuan® Spring Roll Shells		
UPC : 0072869710024		
G/C #: A392320		
PRODUCT INFORMATION:	Super thin for crispier spring rolls. Produced by Wei Chuan, Inc.	
PRODUCT OF	Taiwan	
PACK SIZE:	40 UNITS/CASE	
UNIT SIZE:	11 OZ.	
CASE WEIGHT:	31 LBS.	
CASE DIMENSION:	18.5 x 9.5 x 11	
SHELF LIFE:	1 year. Keep frozen.	

NUTRITION INFORMATION:

Serving Size:	1 pc	(14 g)
Serving Per Container about:	25	
Amount Per Serving		
Calories	25	
Calories from Fat	0	
	% Daily Value*	
Total Fat	0g	0%
Saturated Fat	0g	0%
Trans Fat	0g	0%
Polyunsaturated Fat		
Monounsaturated Fat		
Cholesterol	0mg	0%
Sodium	55mg	2%
Total Carbohydrate	5g	2%
Dietary Fiber	0g	0%
Sugar	0g	
Protein	1g	
Potassium		
Vitamin A	0%	
Vitamin C	0%	
Calcium	0%	
Iron	2%	

* Percent Daily Values are based on a 2000 calories diet.

INGREDIENTS:

Enriched Wheat Flour (Wheat Flour, Niacin, Iron, Thiamine, Riboflavin, Folic Acid), Water, Salt, Soybean Oil, Rice Starch, Sodium Polyphosphate, Sodium Carbonate, Mono and Di-glycerides, Polysorbitan ester of Stearates, Lecithin, Citric Acid.


ALLERGEN INFORMATION:

--

GOLDEN COUNTRY ORIENTAL FOOD

2355 S. Blue Island Ave. Chicago, IL, 60608 | Tel: (773)847-1700 | Fax: (773)847-1717

Product Specification Sheet

Tasty Joy® Premier Spring Rolls Skin		
UPC : 8936015502425		
G/C #: Q516915		
PRODUCT INFORMATION:	Tasty Joy brand banh trang may (spring rolls skin). Round shape, 22 cm in diameter. Imported by GCOF CO.	
PRODUCT OF	VIETNAM	
PACK SIZE:	50 UNITS/CASE	
UNIT SIZE:	12 OZ.	
CASE WEIGHT (LB):	41	
CASE DIMENSION (IN):	19 x 9.6 x 16.9 (in.)	
SHELF LIFE:	30 months. Store in a cool dry place.	

NUTRITION INFORMATION:

Serving Size:	(57 g)	
Serving Per Container about:	6	
Amount Per Serving		
Calories	200	
Calories from Fat	0.3	
% Daily Value*		
Total Fat	0.04g	0%
Saturated Fat	0.017g	0%
Trans Fat	0g	0%
Polyunsaturated Fat		
Monounsaturated Fat		
Cholesterol	0mg	0%
Sodium	80mg	3%
Total Carbohydrate	41g	14%
Dietary Fiber	0g	0%
Sugar	0g	
Protein	7g	
Vitamin A	0%	
Vitamin C	0%	
Calcium	0%	
Iron	0%	

* Percent Daily Values are based on a 2000 calories diet.

INGREDIENTS:

TAPIOCA STARCH (40%), RICE STARCH (25%), SALT (3%), WATER (32%).

ALLERGEN INFORMATION:

Peanut, tree nuts or its derivatives	NO
Sesame or its derivatives	NO
Milk or its derivatives	NO
Eggs or its derivatives	NO
Fish or its derivatives	NO
Crustaceans/shellfish	NO
Soy or its derivatives	NO
Wheat, triticale or their derivatives	NO
Mustard or its derivatives	NO
Sulphites	NO
Processing Aids	NO

Physical Characteristics

Appearance	Circle, 22 cm diameter
Color	white to opaque white
Smell & taste	characteristic
Texture	dry
Moisture	< 15%
Acid Insoluble Ash	≤ 0.1g/100g
pH	≤ 4
Calories	≥ 282 Kcal/100g
Carbohydrate	≥ 70g/100g
Protein	≥ 0.1g/100g
Fat	≤ 0.1g/100g
Cholesterol	≤ 5mg/100g
Sugar	0-0.5g/100g
Natri (Na)	≤ 910mg/100g
Dietary Fiber	≥ 0.7g/100g
Vitamin A	Not Detected
Vitamin C	Not Detected
Calcium (Ca)	0-30mg/100g
Iron (Fe)	0.2-0.5mg/100g

Microbiological Characteristics

TPC	≤ 10 ⁴ cfu/g
Coliforms	≤ 10 cfu/g
E. Coli	≤ 3 cfu/g
Staphylococcus aureus	≤ 10 cfu/g
Clostridium perfringens	≤ 10 cfu/g
Bacillus cereus	≤ 10 cfu/g
Yeasts & Moulds	≤ 10 ² cfu/g

Heavy metal

Cadmi	≤ 0.1 mg/kg
Lead	≤ 0.2 mg/kg

Other Characteristics

Shelf Life	30 months
Storage	cool and dry place
Packing	12 oz. (342 g)

ALLGERGEN STATEMENT*

Tasty Joy® Premier Spring Rolls Skin

Allergen class	Present in the Product	Present on the same line	Present in manufacturing plant
Dairy & Derivatives	NO	NO	NO
Egg & Derivatives	NO	NO	NO
Wheat & Grains Derivatives (wheat, wheat gluten, rye, rye gluten, barley gluten, oat gluten, etc.)	NO	NO	NO
Wheat Gluten	NO	NO	NO
Rye Gluten	NO	NO	NO
Barley Gluten	NO	NO	NO
Oat Gluten	NO	NO	NO
Sesame or its derivatives (paste and oil etc)	NO	NO	NO
Soybean & Derivatives (soybean, lecithin, soybean oil, etc.)	NO	NO	NO
Peanut & Derivatives (Peanut oil, peanuts, etc.)	NO	NO	NO
Tree Nuts & Derivatives (Almonds, tahini, walnuts, tree nuts oil, mustard, etc.)	NO	NO	NO
Fish & Derivatives (Anchovies, bass, salmon, etc.)	NO	NO	NO
Crustacean Shellfish & Derivatives (Crab, lobster, oyster, shrimp, shellfish, crayfish, etc.)	NO	NO	NO
Sulfites (includes sulfur dioxide, chemicals that list sulfite, and natural sources (from shrimp, wine, potatoes, etc.)	NO	NO	NO

*Submitted by the manufacturer.

GOLDEN COUNTRY ORIENTAL FOOD

2355 S. Blue Island Ave. Chicago, IL, 60608 | Tel: (773)847-1700 | Fax: (773)847-1717 | www.goldencountry.com

Product Specification Sheet

Kewpie® Mayonnaise		
ITEM UPC : 075533020023		
G/C #: E084210		
PRODUCT INFORMATION:	Produced by Kewpie Corp. in Japan.	
PRODUCT OF	JAPAN	
PACK SIZE (UNIT/CS):	20	
UNIT SIZE:	17.64 OZ. (500 g)	
CASE WEIGHT (LB.):	24	
CASE DIMENSION (In.):	17 x 9 x 8.5	PALLET (TI X HI):
SHELF LIFE & STORAGE:	6 months when properly stored in a cool dry place. Refrigerate after opening.	

NUTRITION INFORMATION:

Serving Size:	1 tbsp	(14 g)
Serving Per Container about:	35	
Amount Per Serving		
Calories	100	
Calories from Fat	90	
	% Daily Value*	
Total Fat	10g	16%
Saturated Fat	1.5g	8%
Trans Fat	0g	0%
Polyunsaturated Fat		
Monounsaturated Fat		
Cholesterol	20mg	7%
Sodium	100mg	4%
Total Carbohydrate	0g	0%
Dietary Fiber	0g	0%
Sugar	0g	
Protein	0g	
Vitamin A	0%	
Vitamin C	0%	
Calcium	0%	
Iron	0%	

* Percent Daily Values are based on a 2000 calories diet.

INGREDIENTS:

VEGETABLE OIL (CANOLA OIL, SOYBEAN OIL), EGG YOLK, VINEGAR, SALT, MONOSODIUM GLUTAMATE, SPICE, NATURAL FLAVOR.

ALLERGEN INFORMATION:

CONTAINS EGGS.

Additional Information:

Direction is printed on the package.

GOLDEN COUNTRY ORIENTAL FOOD

2355 S. Blue Island Ave. Chicago, IL, 60608 | Tel: (773)847-1700 | Fax: (773)847-1717 | store.goldencountry.com

Product Specification Sheet

Jufran® Banana Sauce		
G/C #: D080408		
Item UPC #: 738055039583		
Case UPC #: 0738055039545		
PRODUCT INFORMATION:	Halal certified. Manufactured by Thai Afri Food Public Co. LTD.	
PRODUCT OF	PHILIPPINES	
PACK SIZE (UNIT/CS):	18	
UNIT SIZE:	19.76 OZ.	
CASE WEIGHT (LB.):	38.5	
CASE DIMENSION (In.):	18 x 9 x 10.25	PALLET (TI X HI): 10 x 4
SHELF LIFE & STORAGE:	2 year (unopened) when properly stored in a cool dry place. Refrigerate after opening.	

NUTRITION INFORMATION:

Serving Size:	2 tbsp	(31g)
Serving Per Container about:	18	
Amount Per Serving		
Calories	35	
Calories from Fat	0	
	% Daily Value*	
Total Fat	0g	0%
Saturated Fat	0g	0%
Trans Fat	0g	
Polyunsaturated Fat		
Monounsaturated Fat		
Cholesterol	0mg	0%
Sodium	260mg	11%
Total Carbohydrate	9g	3%
Dietary Fiber	0g	0%
Sugar	8g	
Protein	0g	
Vitamin A	0%	
Vitamin C	0%	
Calcium	0%	
Iron	0%	

* Percent Daily Values are based on a 2000 calories diet.

INGREDIENTS:

WATER, SUGAR, BANANA, MODIFIED STARCH (CORN), VINEGAR, IODIZED SALT (SALT, POTASSIUM IODATE), ONION, CHILI, GARLIC, 0.1% SODIUM BENZOATE AS PRESERVATIVE, FD&C YELLOW #5, FD&C RED #40, TITANIUM DIOXIDE, ARTIFICIAL BANANA FLAVOR.

ALLERGEN INFORMATION:

CONTAINS NO KNOWN ALLERGENS.

Additional Information:



2355 S. Blue Island Ave. Chicago, IL, 60608 | Tel: (773)847-1700 | Fax: (773)847-1717

Product Specification Sheet	
Kewpie® Mayonnaise Dressing	
UPC : 033357041990	
G/C #: E084213	
PRODUCT INFORMATION:	Improved formula. Manufactured by Q&B Foods, Inc. in USA.
PRODUCT OF	USA
PACK SIZE:	4 UNITS/CASE
UNIT SIZE:	3.78 LTR
CASE WEIGHT:	35.6 LBS.
CASE DIMENSION:	12 x 12 x 12 (in.)
SHELF LIFE:	6 months. Store in a cool dry place. Refrigerate after opening. Do not freeze.



NUTRITION INFORMATION:

Serving Size:	1 tbsp	(14 g)
Serving Per Container about:		242
Amount Per Serving		
Calories		100
Calories from Fat		100
% Daily Value*		
Total Fat	11g	17%
Saturated Fat	1.5g	8%
Trans Fat	0g	0%
Polyunsaturated Fat		
Monounsaturated Fat		
Cholesterol	10mg	3%
Sodium	75mg	3%
Total Carbohydrate	0g	0%
Dietary Fiber	0g	0%
Sugar	0g	
Protein	0g	
Vitamin A		
		0%
Vitamin C		
		0%
Calcium		
		0%
Iron		
		0%

* Percent Daily Values are based on a 2000 calories diet.

INGREDIENTS:

SOYBEAN OIL, EGG YOLKS, WATER, EGG WHITES, VINEGAR, SALT, SUGAR, SODIUM ACETATE, XANTHAN GUM, LEMON JUICE CONCENTRATE, NATURAL FLAVORS, CALCIUM DISODIUM EDTA (TO PROTECT FLAVOR), OLEORESIN PAPRIKA.


ALLERGEN INFORMATION:

CONTAINS EGG.

GOLDEN COUNTRY ORIENTAL FOOD

2355 S. Blue Island Ave. Chicago, IL, 60608 | Tel: (773)847-1700 | Fax: (773)847-1717 | store.goldencountry.com

Product Specification Sheet

Koon Chun® Diluted Black Vinegar		
G/C #: F089320		
Item UPC #: 020717612228		
Case UPC #: 12020717612223		
PRODUCT INFORMATION:	Diluted black vinegar. Packed in glass bottle. HACCP and ISO22000 certified. Halal Certified. Contains 2% acetic acid. Manufactured by Koon Chun Hing Kee Soy & Sauce Factory, Ltd. In Hong Kong.	
PRODUCT OF	Hong Kong	
PACK SIZE (UNIT/CS):	12	UNIT SIZE: 16.9 fl oz.
GROSS CASE WEIGHT (LB.):	28	
CASE DIMENSION (In.):	13.5 x 10.5 x 10.5	PALLET (Ti X Hi): 15 x 5
SHELF LIFE & STORAGE:	3 years (unopened) when properly stored at room temperature. Avoid direct sunlight.	

NUTRITION INFORMATION:

Serving Size:	1 tbsp	(15 ml)
Serving Per Container about:	33	
Amount Per Serving		
Calories	0	
Calories from Fat	0	
	% Daily Value*	
Total Fat	0g	0%
Saturated Fat	0g	0%
Trans Fat	0g	
Polyunsaturated Fat		
Monounsaturated Fat		
Cholesterol	0mg	0%
Sodium	90mg	4%
Total Carbohydrate	< 1g	0%
Dietary Fiber	0g	0%
Sugar	0g	
Protein	0g	
Vitamin A	0%	
Vitamin C	0%	
Calcium	0%	
Iron	0%	

* Percent Daily Values are based on a 2000 calories diet.

INGREDIENTS:

RICE VINEGAR, COLOR (CARMEL I), SALT, SPICES.

ALLERGEN INFORMATION:

CONTAINS NO ALLERGENS.

Additional Information:

Physical Analysis

Appearance: opaque dark brown liquid

Color: dark brown

Flavor: vinegar with spices flavor

Chemical Analysis

Total Soluble Solid (%): 5.0 - 9.0

pH: 3.0 - 4.6

Salt (%): < 1.5

Acidity (g/100 ml): 1.8 - 2.5

Microbiological Analysis

Total Plate Count: < 10,000 cfu/g

Coliforms: < 3 mpn/g

S. aureus: < 20 cfu/g

>>Product image/labeling shown on this spec sheet may differ from the actual product in the future.



2355 S. BLUE ISLAND AVE. CHICAGO, IL 60608

(773) 847-1700

www.goldencountry.com

Product Specification

Brand: Woomtree/Momokan

Product Label: Panko Bread Crumb

UPC No.: 738055130402

Country of Origin: Korea

Container Information:

Specific Product Information:

G/C Code: J130400

Pack/Size: 17.6 LB. Package

Net Weight: 17.6 LB.

Ingredients: Wheat Flour, Yeast, Salt, Glucose

Physical Characteristics:

A. **Color:** Off-white/Beige

B. **Individual Weight:** 17.6 LB.

Storage Information:

Shelf Life: Two years

Storage Guideline:

Store in a cool dry place



2355 S. BLUE ISLAND AVE. CHICAGO, IL 60608

(773) 847-1700

www.goldencountry.com

Nutritional Information:

Serving Size: 1.06 oz. (30g)

Serving Per Container: about 267

Amount Per Serving

Calories 112 Calories from Fat 15

% Daily Value

Total Fat 2g 3%

Saturated Fat 0g 0%

Trans Fat 0g 0%

Cholesterol 0mg 0%

Sodium 200mg 8%

Total Carb. 21g 7%

Dietary Fiber 0g 0%

Sugars 0g

Protein 1g

Vitamin A 0% Vitamin C 0%

Calcium 1% Iron 0%

Percent Daily Values are based on 2000 calorie diet.

Golden Country Item Number: J130400



THEPPADUNGORN COCONUT CO.,LTD. (MAE PLOY)

HEAD OFFICE : 392/56-58 Soi Preecha, MaharaJ Rd., Prabarommaharajchawang, Pranakorn, Bangkok 10200, THAILAND.

TEL. 0-2221-5506, 0-2223-5081, 0-2622-1501 to 6 FAX. 0-2226-4668

FACTORY : 99 Moo 4 Soi Chokchaiyo, Phuttamonthon 4 Rd., Krathumlom, Sampran, Nakhonpathom 73220, THAILAND.

TEL. 0-2814-1391 to 4 FAX. 0-2814-1433



MAE PLOY

SPECIFICATION OF MASSAMAN CURRY PASTE

Product name :	Massaman Curry Paste.			
Shelf life:	2 years from the production date. Not expose to sunlight. Store in cool, dry place. Once opened, keep refrigerates and use within 6 month.			
Packing :	Size of product			
	10x12x50 g	12x400 g	24x400 g	12x1000 g
Net weight (kg)	6.0	4.8	9.6	12.0
Gross weight (kg)	8.6	5.6	11.0	13.5
Quantity / carton	120	12	24	12
Package				
- Material				
Primary	Nylon-P.E/OPP-Paper-P.E	Nylon-P.E	Nylon-P.E	Nylon-P.E
Secondary	Duplex paper	PP/ PE plastic tub	PP/ PE plastic tub	PE plastic tub
Carton	corrugate	corrugate	corrugate	corrugate
- Dimension (cm)				
Primary	12.5x17.5	18.0x24.0	18.0 x 24.0	22.0x30.0
Secondary	8.8x12.7x18.0	9.4x9.2	9.4x9.2	12.5x12.04
Carton	26.04x45.24x19.21	28.26x38.1x10.16	28.26x37.78x18.73	25.08x37.4x24.61
- Barcode:				
Inner	8 850367300044	0 44738 102377	0 44738 102377	0 44738 205696
Outer	88850367300040	20044738 102371	40044738102375	20044738205690

INGREDIENT

Lemongrass 22.0%, Garlic 19.0%, Dried red chilli 14.0%, Shallot 14.0%, Salt 12.0%, Galangal 7.5%, Shrimp paste (Shrimp 80%, Salt 20%) 5.0%, Coriander seed 3.3%, Cumin 1.0%, Kaffir lime peel 1.0%, Cardamom 0.5%, Cinnamon 0.5%, Nutmeg 0.2%

PHYSICAL ANALYSIS

APPEARANCE :	Thick - Paste
COLOUR :	Dark Red - brown
FLAVOUR :	Spicy aroma

CHEMICAL ANALYSIS

SALT : (Titration)	11.0-14.0
MOISTURE :(Moisture balance)	53.0-58.0
A_w VALUE : (Aw analyser)	≤ 0.850

MICROBIOLOGICAL ANALYSIS

Yeast & Mold :	<100 cfu / g
E.coli :	<3 MPN / g
B. cereus :	≤ 1,000 cfu/g
Cl.Perfingens :	≤ 1,000 cfu/g
S.aureus :	ND / 0.1 g
Salmonella spp.:	ND / 25 g



2355 S. Blue Island Ave. Chicago, IL, 60608
 Tel: (773)847-1700 | Fax: (773)847-1717

Product Specification Sheet

Erawan Tapioca Starch

UPC #: 055104001002

G/C #: B137240

Product information: Erawan Tapioca Starch.

Product of Thailand

Pack size: 24 x 1 lbs

Shelf Life: The product should be stored in a cool dry place. Shelf life is 2 year.

Net Weight: 1 lb

Pallet Config: 11 x 7

Case Dimension: 14.25 x 11 x 7 : .64

Ingredients: manioc, water

Nutrition Information:

Serving Size: 1 tbsp (10 g)

Serving Per Container: About 45

Amount Per Serving

	Amount	Calories from Fat	
		% Daily Value*	
Calories	35		0
Total Fat	0g	0%	
Saturated Fat	0g	0%	
Trans Fat	0g		
Cholesterol	0mg	0%	
Sodium	0mg	0%	
Total Carbohydra	9g	3%	
Dietary Fiber	0g	0%	
Sugar	0g		
Protein	0g		

Vitamin A 0% Vitamin C 0%

Calcium 0% Iron 0%

* Percent Daily Values are based on a 2000 calories diet.



2355 S. Blue Island Ave. Chicago, IL, 60608 | Tel: (773)847-1700 | Fax: (773)847-1717

Product Specification Sheet

Windmill® Potato Starch		
UPC :		
G/C #: Y137275		
PRODUCT INFORMATION:	See attachment.	
PRODUCT OF	HOLLAND	
PACK SIZE:	1 UNITS/CASE	
UNIT SIZE:	50 LBS.	
CASE WEIGHT:	50 LBS.	
CASE DIMENSION:	25 x 15 x 5 (in.)	
SHELF LIFE:	3 years if properly stored in a cool dry place.	

NUTRITION INFORMATION:

Serving Size:
Serving Per Container about:
Amount Per Serving
Calories
Calories from Fat
% Daily Value*
Total Fat
Saturated Fat
Trans Fat
Polyunsaturated Fat
Monounsaturated Fat
Cholesterol
Sodium
Total Carbohydrate
Dietary Fiber
Sugar
Protein
Vitamin A
Vitamin C
Calcium
Iron

INGREDIENTS:

POTATO STARCH

ALLERGEN INFORMATION:

See attachment.

* Percent Daily Values are based on a 2000 calories diet.

Product Data Sheet

Item Potato starch, food grade, Windmill brand
Packing 1000kg big bags

Type	Min	Max	Unit	Text
Appearance				white powder
Taste & odour				neutral, bland and free from objectionable odours
Moisture		20.5	%	
pH	6	8		
Top viscosity	1350		BU	
Sulphur Dioxide (SO ₂)		10	mg/kg	
Total Plate Count		10000	cfu/g	
Yeasts & Moulds		500	cfu/g	
Coliforms		10	cfu/g	
E. coli				absent in 1 gram
Salmonella				absent in 25 gram

Shelf Life

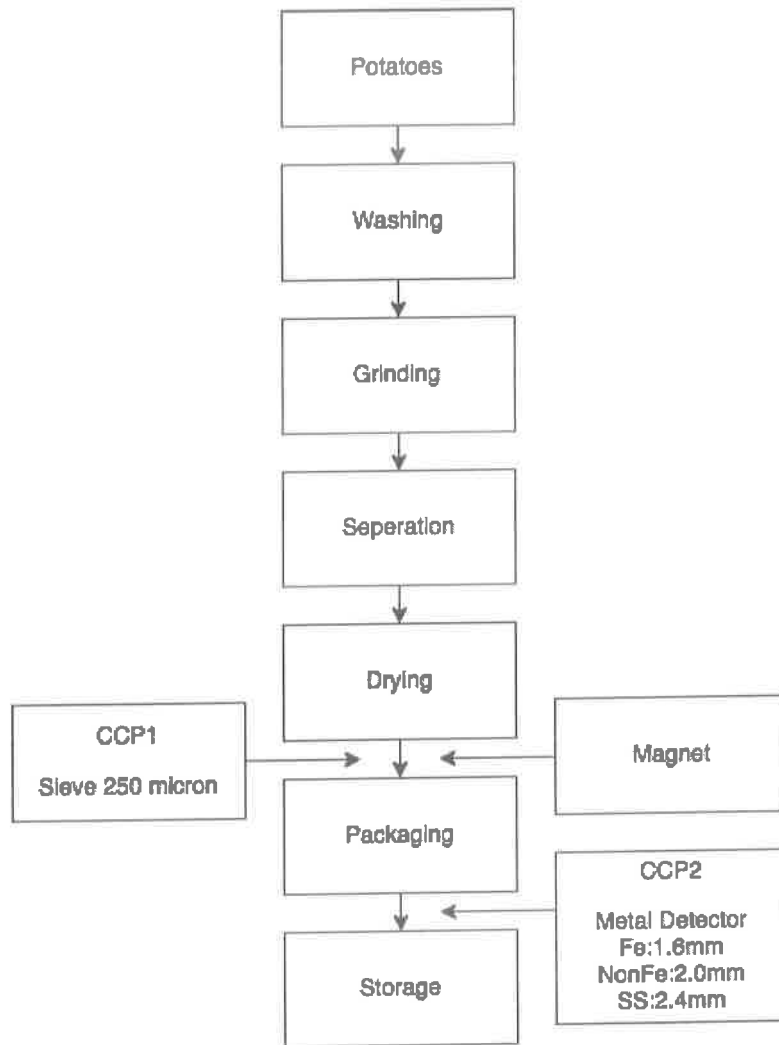
36 months after date of production, in closed packing.

Storage Conditions

Store in cool, 20 °C max, dry, 60% RH max, conditions, off ground, away from chemicals and odorous materials.

HACCP Flow Chart

Product: Windmill Potato Starch



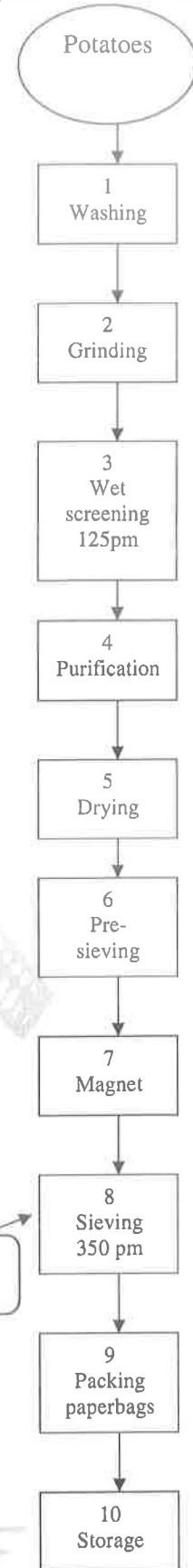
Meelunie America, Inc.
July 6, 2017

QUALITY MANAGEMENT AND HACCP INFORMATION SHEET

Potato Starch food grade Windmill Brand (code MA-03)

Standard operations procedures include:

- Raw material and process water control
- Personal hygiene
- Cleaning of equipment and instructions premises
- (preventive) maintenance and calibration
- Internal ISO/GMP – audit system
- Training in food safety and hygiene
- Registration and traceability procedure



Hazard	Control	Correction
Foreign material (bulk/bags)	Magnet in-line is checked by operator after every bulk loading and after packing every 8 hours. Record on checklist.	See sieving
	CCP1 Sieve is checked by operators after packing every 8 hours. Record on checklist	In case of failure the lot is put on hold
Pathogens	<ul style="list-style-type: none"> - CIP – procedure - Drying - End product testing by lab 	In case of failure lot is put on hold

NUTRITIONAL DATA SHEET

POTATO STARCH

NUTRITIONAL INFORMATION

TYPICAL ANALYSIS Values Per 100g (based on dry basis)

Protein (Nx6.25)	0.1 g max
Moisture	20.0 % max
Carbohydrates	79.0 g
Total Dietary Fat	0.1 g max
Total Dietary Fiber	0.3 g
Ash	0.5 g max
Cholesterol (mg)	NA
Calories From Fat	NA
Caloric Value	330 calories
Vitamins A (IU)	0.0 mg
Vitamins C (IU)	0.0 mg
Sodium	15.0 mg max
Iron	0.5 mg max
Calcium	39.0 mg max
Potassium	60.0 mg max

12/06/2017

LOT KEY CODE

Product: WINDMILL POTATO STARCH

Date of issue: 1-27-2016

Potato Starch Lot numbers are deciphered as follows:

Lot number: G2721510

G = current year

27 = week of year = July

2 = day of week = 4

1510 = internal/batch run



2355 S. BLUE ISLAND AVE. CHICAGO, IL 60608

(773) 847-1700

www.goldencountry.com

Product Specification

Brand: Erawan

Product Label: Rice Flour

Container Information:

Specific Product Information:

G/C Code: B132820

Pack/Size: 24 x 1 LB. Package

Net Weight: 24 LB.

Ingredients: Glutinous Rice flour, Flour, Water

Physical Characteristics:

A. **Color:** Off-white

B. **Individual Weight:** 1 LB.

Storage Information:

Shelf Life: Two years

Storage Guideline:

Store in a cool dry place



2355 S. BLUE ISLAND AVE. CHICAGO, IL 60608

(773) 847-1700

www.goldencountry.com

Nutritional Information:

Serving Size: ½ Cup (30g)

Serving Per Container: about 15

Amount Per Serving

Calories 110 Calories from Fat 0

% Daily Value

Total Fat	0g		0%
Saturated Fat	0g		0%
Cholesterol	0mg		0%
Sodium	0mg		0%
Total Carb.	24g		8%
Dietary Fiber	0g		0%
Sugars	0g		
Protein	2g		
Vitamin A	0%	Vitamin C	0%
Calcium	0%	Iron	0%


Percent Daily Values are based on 2000 calorie diet.

Golden Country Item Number: B132820

GOLDEN COUNTRY ORIENTAL FOOD

2355 S. Blue Island Ave. Chicago, IL, 60608 | Tel: (773)847-1700 | Fax: (773)847-1717 | store.goldencountry.com

Product Specification Sheet

Tasty Joy® Unpeeled Soybean (Edamame)		
G/C #: A407370		
Item UPC #: 738055407375		
Case UPC #: 10038055407373		
PRODUCT INFORMATION:	100% natural. High protein. Non-GM.	
PRODUCT OF	CHINA	
PACK SIZE (UNIT/CS):	24	UNIT SIZE: 16 oz.
GROSS CASE WEIGHT (LB.):	25.4	
CASE DIMENSION (In.):	14 x 11 x 9	PALLET (TI X HI): 10 x 5
SHELF LIFE & STORAGE:	18 months when properly kept frozen.	

NUTRITION INFORMATION:

Serving Size:	1 cup	(100g)
Serving Per Container about:	4	
Amount Per Serving		
Calories	110	
Calories from Fat	45	
		% Daily Value*
Total Fat (g)	5	7.69%
Saturated Fat (g)	0.4	2.00%
Trans Fat (g)	0	
Polyunsaturated Fat		
Monounsaturated Fat		
Cholesterol (mg)	0	0.00%
Sodium (mg)	5	0.21%
Total Carbohydrate (g)	6	2.00%
Dietary Fiber (g)	4	16.00%
Sugar (g)	2	
Added Sugar (g)	0	
Protein (g)	11	
Potassium		
Vitamin A		0%
Vitamin C		2%
Calcium		4%
Iron		10%

INGREDIENTS:

SOYBEANS

ALLERGEN INFORMATION:

CONTAINS SOYBEAN.

Additional Information:

Cooking instructions are printed on the bag.
--

* Percent Daily Values are based on a 2000 calories diet.

>>Product image/labeling shown on this spec sheet may vary from the actual product in the future.



2355 S. Blue Island Ave. Chicago, IL, 60608
 Tel: (773)847-1700 | Fax: (773)847-1717

Product Specification Sheet
Tasty Joy® Peeled Soy Bean (Frozen)
 UPC #: 654156857881
 G/C #: A407380

Product Information:

Product of USA
Pack Size: 24 units/case **Case Weight:** 25.4 lbs.
Unit Size: 16 oz
Shelf Life: Shelf life is 2 year. Keep frozen.
Pallet Config: 10 x 7
Case Dimension: 14 x 11 x 9

Nutrition Information:

Serving Size:	1 cup	(100g)
Serving Per Container about:	4	
Amount Per Serving		
Calories	110	
Calories from Fat	45	
	% Daily Value*	
Total Fat	5g	8%
Saturated Fat	0.4g	2%
Trans Fat	0g	0%
Polyunsaturated Fat		
Monounsaturated Fat		
Cholesterol	0mg	0%
Sodium	5mg	0%
Total Carbohydrate	6g	2%
Dietary Fiber	4g	16%
Sugar	2g	
Protein	11g	22%
Vitamin A	0%	
Calcium	4%	
Vitamin C	2%	
Iron	10%	

Ingredients:

Soybeans

* Percent Daily Values are based on a 2000 calories diet.



2355 S. Blue Island Ave. Chicago, IL, 60608 | Tel: (773)847-1700 | Fax: (773)847-1717

Product Specification Sheet	
PHOENIX JEWEL® Thai Hom Mali Rice	
UPC : 738055466839	
G/C #: B466803	
PRODUCT INFORMATION:	Exported by Thai Ha Public Co. Ltd., Thailand
PRODUCT OF	THAILAND
PACK SIZE:	1 UNITS/CASE
UNIT SIZE:	25 LBS.
CASE WEIGHT:	25 LBS.
CASE DIMENSION:	14 x 3 x 20
SHELF LIFE:	2 years. Store in cool dry place. Avoid direct sunlight.



NUTRITION INFORMATION:

Serving Size:	2.1 oz	(50 g)
Serving Per Container about:	227	
Amount Per Serving		
Calories	180	
Calories from Fat	0	
	% Daily Value*	
Total Fat	0g	0%
Saturated Fat	0g	0%
Trans Fat	0g	0%
Polyunsaturated Fat		
Monounsaturated Fat		
Cholesterol	0mg	0%
Sodium	0mg	0%
Total Carbohydrate	41g	14%
Dietary Fiber	0g	0%
Sugar	0g	
Protein	3g	
Protassium		
Vitamin A	0%	
Vitamin C	2%	
Calcium	0%	
Iron	0%	

* Percent Daily Values are based on a 2000 calories diet.

INGREDIENTS:

RICE

ALLERGEN INFORMATION:

--



THAI HA PUBLIC COMPANY LIMITED

Product Specification of Rice

PRODUCT NAME : THAI JASMINE RICE 100%N25lbs

BRAND : PHOENIX JEWEL

PRODUCT INFORMATION	SPECIFICATION
Grain Composition (%)	
Whole kernels	> 60.00
Head rice	Not Specified
Broken	≤ 4.50
Rice and matter that may be present, not exceeding(%)	
Red and Under milled kernels	< 0.50
Chalky kernels	< 6.00
Damaged kernels	< 0.25
Yellow kernels	< 0.20
Paddy (grains/1 Kg.)	< 3.00
Glutinous rice	< 1.50
Undeveloped, Immature kernels, Other seeds and Foreign matter	< 0.20
Chemical Characteristic	
Moisture (%)	14 Max
Pesticides	Follow by MRLs
Microorganism Characteristic	
Aerobic plate count	< 10,000 cfu/g
Yeast & Mold	< 500 cfu/g
<i>Escherichia Coli</i>	< 10 cfu/g
<i>Bacillus cereus</i>	< 100 cfu/g
<i>Clostridium Perfringens</i>	< 10 cfu/g
<i>Staphylococcus aureus</i>	Not detect in 0.1 g
<i>Salmonella spp.</i>	Not detect in 25 g

Signed for and on behalf of THAI HA PCL

A. Laksana

Quality Assurance Manager
January 18, 2017

Quality Assurance Department

Tel. (+662) 482-1663-6 Fax:(+6634) 288-415



THAI HA PUBLIC COMPANY LIMITED

Product Specification of Rice

PRODUCT NAME : THAI JASMINE RICE 100% N50lbs

BRAND : PHOENIX JEWEL

PRODUCT INFORMATION	SPECIFICATION
Grain Composition (%)	
Whole kernels	> 60.00
Head rice	Not Specified
Broken	≤ 4.50
Rice and matter that may be present, not exceeding(%)	
Red and Under milled kernels	< 0.50
Chalky kernels	< 6.00
Damaged kernels	< 0.25
Yellow kernels	< 0.20
Paddy (grains/1 Kg.)	< 3.00
Glutinous rice	< 1.50
Undeveloped, Immature kernels, Other seeds and Foreign matter	< 0.20
Chemical Characteristic	
Moisture (%)	14 Max
Pesticides	Follow by MRLs
Microorganism Characteristic	
Aerobic plate count	< 10,000 cfu/g
Yeast & Mold	< 500 cfu/g
<i>Escherichia Coli</i>	< 10 cfu/g
<i>Bacillus cereus</i>	< 100 cfu/g
<i>Clostridium Perfringens</i>	< 10 cfu/g
<i>Staphylococcus aureus</i>	Not detect in 0.1 g
<i>Salmonella spp.</i>	Not detect in 25 g

Signed for and on behalf of THAI HA PCL

A. Laksana

Quality Assurance Manager
January 18, 2017

Quality Assurance Department

Tel. (+662) 482-1663-6 Fax:(+6634) 288-415



2355 S. Blue Island Ave. Chicago, IL, 60608
 Tel: (773)847-1700 | Fax: (773)847-1717

Product Specification Sheet

Nishiki® Premium Grade Medium Grain Rice

UPC #: 011152156880

G/C #: G466937

Product Information: Premium grade rice. Specially selected medium grain rice.

Product of: USA
Pack Size: 1 units/case **Case Weight:** 15 lbs.
Unit Size: 15 lbs.
Shelf Life: Store in a cool dry place. Shelf life is 2 year.
Pallet Config: 15 x 10
Case Dimension: 16.5 x 11 x 3 : .32

Nutrition Information:
Serving Size: 1/4 cups (42g)
Serving Per Container about: 162

Ingredients:
 milled rice

Amount Per Serving
Calories 150
Calories from Fat 0

	% Daily Value*	
Total Fat	0g	0%
Saturated Fat	0g	0%
Trans Fat	0g	0%

Polyunsaturated Fat		
Monounsaturated Fat		
Cholesterol	0mg	0%
Sodium	0mg	0%
Total Carbohydrate	33g	11%
Dietary Fiber	0	
Sugar	0	
Protein	3g	

Vitamin A	0%
Calcium	0%
Vitamin C	0%
Iron	0%

* Percent Daily Values are based on a 2000 calories diet.



2355 S. Blue Island Ave. Chicago, IL, 60608 | Tel: (773)847-1700 | Fax: (773)847-1717

Product Specification Sheet	
Lee Kum Kee® Chili Oil	
UPC : 078895733563	
G/C #: F084995	
PRODUCT INFORMATION:	Lee Kum Kee Chili Oil. Produced in Lee Kum Kee Co. Ltd.
PRODUCT OF	CHINA
PACK SIZE:	12 UNITS/CASE
UNIT SIZE:	7 OZ.
CASE WEIGHT:	10.5 LBS.
CASE DIMENSION:	9 x 7 x 8.5
SHELF LIFE:	1 year. Store in cool dry place. Avoid direct sunlight.



NUTRITION INFORMATION:

Serving Size:	1 tbsp	(15 ml)
Serving Per Container about:		14
<u>Amount Per Serving</u>		
Calories		130
Calories from Fat		130
	% Daily Value*	
Total Fat	14g	22%
Saturated Fat	2g	10%
Trans Fat	0g	0%
Polyunsaturated Fat		
Monounsaturated Fat		
Cholesterol	0mg	0%
Sodium	0mg	0%
Total Carbohydrate	0g	0%
Dietary Fiber	0g	0%
Sugar	0g	
Protein	0g	
Protassium		
Vitamin A		0%
Vitamin C		0%
Calcium		0%
Iron		0%

* Percent Daily Values are based on a 2000 calories diet.

INGREDIENTS:

SOYBEAN OIL, DRIED CHILI PEPPERS

ALLERGEN INFORMATION:

CONTAINS SOYBEANS



2355 S. BLUE ISLAND AVE. CHICAGO, IL 60608

(773) 847-1700

www.goldencountry.com

Product Specification

Brand: Somboon

UPC# 0738055228321

Product Label: Wet Seedless Tamarind

Container Information:

Specific Product Information:

G/C Code: B228320

Pack/Size: 50 x 14 Oz. Pkg

Net Weight: 43.75 LBS.

Ingredients: Tamarind.

Physical Characteristics:

A. Color: Brown

B. Individual Weight: 14 Oz.

Storage Information:

Shelf Life: One Year

Storage Guideline:

Store in a cool dry place.

Nutritional Information:

Serving Size: 1 Cup (10g)

Servings Per Package: 40

Amount Per Serving

Calories 10 Calories From Fat 0

% Daily Value

Total Fat 0g 0%

Saturated Fat 0g 0%

Trans Fat 0g

Cholesterol 0mg 0%

Sodium 0mg 0%

Total Carb. 2g 2%

Dietary Fiber 1g 4%

Sugars 0g

Protein 0g

Vitamin A 0% Vitamin C 2%

Calcium <2% Iron 2%

Percent Daily Values are based on 2000 calorie diet.

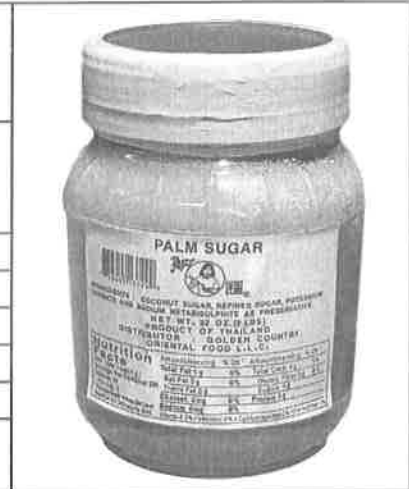
Golden Country Item Number: B228320



2355 S. Blue Island Ave. Chicago, IL, 60608 | Tel: (773)847-1700 | Fax: (773)847-1717

Product Specification Sheet

TASTY JOY® PALM SUGAR UPC #: 738055137999 G/C #: B137992	
PRODUCT INFORMATION:	Distributed by Golden Country Oriental Food, LLC.
PRODUCT OF	THAILAND
PACK SIZE:	12 UNITS/CASE
UNIT SIZE:	2 LBS.
CASE WEIGHT:	28.6 LBS.
CASE DIMENSION:	16 X 12 X 6.5
SHELF LIFE:	2 years. Store in cool dry place.



NUTRITION INFORMATION:

Serving Size:	1 tbsp.	(4 g)
Serving Per Container about:		226
Amount Per Serving		
Calories		15
Calories from Fat		0
	% Daily Value*	
Total Fat	0g	0%
Saturated Fat	0g	0%
Trans Fat	0g	0%
Polyunsaturated Fat		
Monounsaturated Fat		
Cholesterol	0mg	0%
Sodium	0mg	0%
Total Carbohydrate	4g	1%
Dietary Fiber	0g	0%
Sugar	4g	
Protein	0g	
Protassium		
Vitamin A		0%
Vitamin C		0%
Calcium		2%
Iron		2%

INGREDIENTS:

COCONUT SUGAR, REFINED SUGAR, POTASSIUM SORBATE AND SODIUM METABISULPHITE AS PRESERVATIVE.

ALLERGEN INFORMATION:

--

* Percent Daily Values are based on a 2000 calories diet.

GOLDEN COUNTRY ORIENTAL FOOD

2355 S. Blue Island Ave. Chicago, IL, 60608 | Tel: (773)847-1700 | Fax: (773)847-1717 | www.goldencountry.com

Product Specification Sheet

Aji-no-moto® Monosodium Glutamate	
G/C #: E430050	
Item UPC #: 071757010062	
Case UPC #: 10071757010069	
PRODUCT INFORMATION:	Ajinomoto umami seasoning. White, practically odorless crystals or crystalline powder with characteristic taste. Naturally fermented from corn. Produced in USA under licensed by Ajinomoto Co, Inc, Japan.
PRODUCT OF	USA
PACK SIZE (UNIT/CS):	48
UNIT SIZE:	1 LB.
CASE WEIGHT (LB.):	52
CASE DIMENSION (In.):	19 x 15 x 8 PALLET (TI X HI):
SHELF LIFE & STORAGE:	5 years (unopened) when properly stored in a cool dry place. Avoid direct sunlight.



NUTRITION INFORMATION:

Serving Size:	1/4 tsp	(1g)
Serving Per Container about:		454
Amount Per Serving		
Calories		0
Calories from Fat		0
	% Daily Value*	
Total Fat	0g	0%
Saturated Fat	0g	0%
Trans Fat	0g	
Polyunsaturated Fat		
Monounsaturated Fat		
Cholesterol	0mg	0%
Sodium	125mg	5%
Total Carbohydrate	0g	0%
Dietary Fiber	0g	0%
Sugar	0g	
Protein	0g	
Vitamin A		0%
Vitamin C		0%
Calcium		0%
Iron		0%


* Percent Daily Values are based on a 2000 calories diet.

INGREDIENTS:


Content not less than 99.0% of $C_5H_8NNaO_4 \cdot H_2O$ on the dried basis(non-aqueous titration),

ALLERGEN INFORMATION:

Additional Information:

 exporters inc. HAZARD ANALYSIS CRITICAL CONTROL POINT MANUAL	Document Title:	Document No:
	HACCP Step 2 / Step 3 Product Description / Intended Use 2.1 Banana Leaves	MEEI-HACCP-PDIUBL-2.1 Department: QC/R&D Effectivity Date: September 28, 2016 Revision No.: 2

PRODUCT NAME	Banana Leaves	Scientific name: <i>Musa x paradisiaca</i>																														
COMPOSITION	Banana leaves																															
PRODUCT CHARACTERISTICS	Microbiological Characteristics <table border="1"> <tr><td><i>E. coli</i></td><td>100 cfu/g max</td></tr> <tr><td>Salmonella</td><td>No detectable presence</td></tr> <tr><td>Total Plate Count</td><td>5 x 10⁵ cfu/g max</td></tr> <tr><td>Coliform Count</td><td>100 cfu/g max</td></tr> </table> Metals (maximum limit) <table border="1"> <tr><td>Lead</td><td>1.0 ppm</td></tr> <tr><td>Cadmium</td><td>0.2 ppm</td></tr> <tr><td>Arsenic</td><td>0.1 ppm</td></tr> </table> Pesticide Residue <table border="1"> <tr><td>Organophosphates</td><td><0.01 mg/kg</td></tr> <tr><td>Organochlorines</td><td><0.01 mg/kg</td></tr> <tr><td>Pyrethroids</td><td><0.01 mg/kg</td></tr> </table> Sensory Evaluation: <table border="1"> <tr><td>Color</td><td>Green to dark green, free from foreign extraneous matter</td></tr> <tr><td>Odor</td><td>No objectionable odor</td></tr> <tr><td>Texture</td><td>Soft but firm</td></tr> </table>		<i>E. coli</i>	100 cfu/g max	Salmonella	No detectable presence	Total Plate Count	5 x 10 ⁵ cfu/g max	Coliform Count	100 cfu/g max	Lead	1.0 ppm	Cadmium	0.2 ppm	Arsenic	0.1 ppm	Organophosphates	<0.01 mg/kg	Organochlorines	<0.01 mg/kg	Pyrethroids	<0.01 mg/kg	Color	Green to dark green, free from foreign extraneous matter	Odor	No objectionable odor	Texture	Soft but firm				
<i>E. coli</i>	100 cfu/g max																															
Salmonella	No detectable presence																															
Total Plate Count	5 x 10 ⁵ cfu/g max																															
Coliform Count	100 cfu/g max																															
Lead	1.0 ppm																															
Cadmium	0.2 ppm																															
Arsenic	0.1 ppm																															
Organophosphates	<0.01 mg/kg																															
Organochlorines	<0.01 mg/kg																															
Pyrethroids	<0.01 mg/kg																															
Color	Green to dark green, free from foreign extraneous matter																															
Odor	No objectionable odor																															
Texture	Soft but firm																															
INTENDED SHELF LIFE (Coding system depends on the customer. Refer to MEEI-PM-TS-7.0)	1 year from date of production																															
AND STORAGE CONDITIONS	Product Code: SS PPMDDY SS - Refers to the raw material supplier's code PP - Refers to the production date MM - Refers to the month of production DD - Refers to the date of delivery of raw material Y - Refers to the last digit of the year of production Must be stored in a clean cold storage, temperature is maintained at -18 °C and below.																															
PACKAGING	1. Migration Test /Metals (Maximum limit) <table border="1"> <tr><td>Lead (Pb)</td><td>0.4 ppm</td></tr> <tr><td>Cadmium (Cd)</td><td>0.1 ppm</td></tr> </table> 2. Potassium Permanganate (KMnO₄) <table border="1"> <tr><td></td><td>10 ppm</td></tr> </table> 3. Residue on Evaporation <table border="1"> <tr><td>a. Water</td><td>30 ppm</td></tr> <tr><td>b. 20 % ethanol</td><td>30 ppm</td></tr> <tr><td>c. 4 % Acetic Acid</td><td>30 ppm</td></tr> <tr><td>d. n-Heptane</td><td>150 ppm</td></tr> </table> 4. UV Examination <table border="1"> <tr><td>a. Water</td><td>0.3 Au</td></tr> <tr><td>b. 20 % Ethanol</td><td>0.3 Au</td></tr> <tr><td>c. 4 % Acetic Acid</td><td>0.3 Au</td></tr> <tr><td>d. n-Heptane</td><td>0.1 Au</td></tr> </table> Printing Ink (Maximum limit) <table border="1"> <tr><td>Lead (Pb)</td><td>100 ppm</td></tr> <tr><td>Cadmium (Cd)</td><td>100 ppm</td></tr> <tr><td>Mercury (Hg)</td><td>100 ppm</td></tr> <tr><td>Hexavalent chromium (Cr6)</td><td>100 ppm</td></tr> </table>		Lead (Pb)	0.4 ppm	Cadmium (Cd)	0.1 ppm		10 ppm	a. Water	30 ppm	b. 20 % ethanol	30 ppm	c. 4 % Acetic Acid	30 ppm	d. n-Heptane	150 ppm	a. Water	0.3 Au	b. 20 % Ethanol	0.3 Au	c. 4 % Acetic Acid	0.3 Au	d. n-Heptane	0.1 Au	Lead (Pb)	100 ppm	Cadmium (Cd)	100 ppm	Mercury (Hg)	100 ppm	Hexavalent chromium (Cr6)	100 ppm
Lead (Pb)	0.4 ppm																															
Cadmium (Cd)	0.1 ppm																															
	10 ppm																															
a. Water	30 ppm																															
b. 20 % ethanol	30 ppm																															
c. 4 % Acetic Acid	30 ppm																															
d. n-Heptane	150 ppm																															
a. Water	0.3 Au																															
b. 20 % Ethanol	0.3 Au																															
c. 4 % Acetic Acid	0.3 Au																															
d. n-Heptane	0.1 Au																															
Lead (Pb)	100 ppm																															
Cadmium (Cd)	100 ppm																															
Mercury (Hg)	100 ppm																															
Hexavalent chromium (Cr6)	100 ppm																															
Relevant Food Safety Regulations:	<ul style="list-style-type: none"> - PNS 1104:1992 Plastic Materials for Food Contact Use - Colourants - Specification - US FDA 21 CFR Part 177 and 21 CFR Part 175 for Plastic Materials or resinous materials. - Specification, Standards and Testing Methods for Foodstuffs, Implements, Containers and Packaging, Toys, Detergents 2008, January 2009, JETRO (Japan External Trade Organization) - Specifications and Standards for Foods, Food Additives, etc. Under the Food Sanitation Act (Abstract) 2010, JETRO (Japan External Trade Organization) - Model Toxics in Packaging Legislation 																															
	Primary	PE bag	454 g -500 g	12" x 20" x 0.003																												
	Secondary	Carton boxes	FV02 B	30 x 16 oz	21" x 16" x 6 1/2																											

<p>macroerma exporters inc. HAZARD ANALYSIS CRITICAL CONTROL POINT MANUAL</p>	<p>Document Title: HACCP Step 2 / Step 3 Product Description / Intended Use 2.1 Banana Leaves</p>	<p>Document No: MEEI-HACCP-PDIUBL-2.1 Department: QC/R&D Effectivity Date: September 28, 2016 Revision No.: 2</p>
<p>LABELING</p> <p>Relevant Food Safety Regulations:</p> <ul style="list-style-type: none"> • Guide to Food Labeling and Advertising Canadian Food Inspection Agency • A Food Labeling Guide Guidance for Industry US Department of Health and Human Service; Food and Drug Administration Center for Food Safety and Applied Nutrition 	<div style="display: flex; align-items: center;">  <div style="margin-left: 20px;"> <p>Instruction for handling: KEEP FROZEN GARDER CONGELÉ</p> </div> </div>	
<p>METHOD OF DISTRIBUTION</p>	<p>Clean, refrigerated van with a temperature of -18 °C and below.</p>	
<p>INTENDED USE</p>	<p>Use for wrapping of food and plate lining. Keep frozen if not totally used.</p>	
<p>TARGET GROUP OF USERS AND SPECIAL CONSUMER CONSIDERATIONS</p>	<p>A. Target Group of users: General Public/Restaurant/Catering B. Consideration of vulnerable groups/Immuno-compromised:</p> <p><input checked="" type="checkbox"/> Pregnant <input checked="" type="checkbox"/> Elderly <input checked="" type="checkbox"/> Infants <input checked="" type="checkbox"/> Sick</p>	
<p>UNINTENDED BUT REASONABLY EXPECTED MISHANDLING AND MISUSE</p>	<p>Not intended to be consumed</p>	



2355 S. BLUE ISLAND AVE. CHICAGO, IL 60608
 T: 773-847-1700 F: 773-847-1717

Product Specification Sheet

SOY SAUCE PONZU KIKKOMAN

UPC # 041390020810

G/C # E07733

Ingredients: Soy sauce (water, wheat, soybeans, salt), water, vinegar, sugar, salt, bonito extract (fish), lactic acid, lemon juice, autolyzed yeast extract, natural lemon and orange flavors with other natural flavors, sodium benzoate: less than 1/10 of 1% as a preservative, succinic acid, disodium inosinate, disodium guanylate

Country of Origin: Japan

Pack Size: ~~12 x 10 oz. bottles~~ 6 X 0.5 GAL (64 FL OZ)

Shelf Life: 18 months

Storage Condition: Refrigerate after opening.

Case Gross Weight: ~~14.50 lbs~~ 30 lbs **Net Weight:** 7.5 lbs

Case Dimension: ~~9.63 x 7.25 x 8.5~~ : .34

Nutrition Information:

Serving Size: 1 Tbsp (15 ml)

Serving Per Container: About 20

Amount per serving

Calories: 10

Calories from Fat 0

% Daily Value

Total Fat	0 g.	0 %
Sodium	400 mg.	17 %
Total Carbohydrate	2 g.	1 %
Sugars	2 g	
Protein	Less than 1 g.	

Percent Daily Values are based on a 2,000 calorie diet.



2355 S. BLUE ISLAND AVE. CHICAGO, IL 60608

(773) 847-1700

www.goldencountry.com

Product Specification

Brand: Huy Fong

Product Label: Sambal Oelek Ground Fresh Chili Paste

UPC# 0024463101081

Container Information:

Specific Product Information:

G/C Code: G087220

Pack/Size: 12 x 18 Oz. Jar

Net Weight: 13.5 LBS.

Ingredients: Chili, Salt, Distilled Vinegar, Potassium Sorbate and Sodium Bisulfite as preservatives, Xanthan Gum.

Allergen Warning: Contains Sulphites.

Physical Characteristics:

A. Color: Red

B. Individual Weight: 18 Oz.

Storage Information:

Shelf Life: Two years from date of manufacturing.

Storage Guideline:

Store in a cool dry place. Can be refrigerated.

Nutritional Information:

Serving Size: 1 Tsp (5g)

Serving Per Container: about 102

Amount Per Serving

Calories 0	Calories From Fat 0
% Daily Value	

Total Fat 0g	0%
--------------	----

Sodium 110mg	5%
--------------	----

Total Carb. 0g	0%
----------------	----

Sugars <1g	
------------	--

Protein 0g	
------------	--

Percent Daily Values are based on 2000 calorie diet.

Golden Country Item Number: G087220



2355 S. BLUE ISLAND AVE. CHICAGO, IL 60608

(773) 847-1700

www.goldencountry.com

Product Specification

Brand: Tasty Joy

Product Label: Hot Mustard Sauce

UPC# ~~G084530~~ 6084540

Container Information:

Specific Product Information:

G/C Code: G084530 **Pack/Size:** ~~4x1 Gal.~~ 12 X 8 OZ **Net Weight:** ~~33.4 LBS.~~ 11 lbs

Ingredients: Water, Mustard Flour, Salt, Xanthan Gum, Citric Acid, 1/10 of 1% Sodium Benzoate (Preservative).

Physical Characteristics:

- A. Color: Yellow
- B. Individual Weight: 8.35 LBS.

Nutritional Information:

No Information Available

Storage Information:

Shelf Life: Two Years

Storage Guideline:

Store in a cool dry place.

Golden Country Item Number: G084530