

GOLDEN COUNTRY

ORIENTAL FOOD

2355 S. Blue Island Ave. Chicago, IL, 60608 | Tel: (773)847-1700 | Fax: (773)847-1717 | store.goldencountry.com

Product Specification Sheet

Mae Ploy® Red Curry Paste	
G/C #: B456165	
Item UPC #: 044738201698	
Case UPC #: 20044738201692	
PRODUCT INFORMATION:	No MSG. No preservative. No artificial color. Halal certified. Blended with red chili and spices with shrimp paste. Packed in PE plastic tub. Produced by Theppadungporn Coconut Co. Ltd. In Thailand.
PRODUCT OF	THAILAND
PACK SIZE (UNIT/CS):	12 UNIT SIZE (NET WEIGHT): 35 oz.
CASE GROSS WEIGHT (LB.):	29.76
CASE DIMENSION (In.):	14.76 x 10.04 x 10.04 PALLET (Ti x Hi): 10 x 5
SHELF LIFE & STORAGE:	2 years (unopened) when properly stored in room temperature. Avoid direct sunlight. Refrigerate after opening and use within 6 months.



NUTRITION INFORMATION:

Serving Size:	100g	
Serving Per Container about:		
Amount Per Serving		
Calories	136	
Calories from Fat	14.67	
	% Daily Value*	
Total Fat (g)	1.63	2.51%
Saturated Fat (g)	0.37	1.85%
Trans Fat (g)	0	
Polyunsaturated Fat	0	
Monounsaturated Fat	0	
Cholesterol (mg)	13.34	4.45%
Sodium (mg)	5674.22	236.43%
Total Carbohydrate (g)	24.19	8.06%
Dietary Fiber (g)	13.54	54.16%
Sugar (g)	7.27	
Added Sugar (g)		
Protein (g)	6.06	
Potassium (mg)		
Vitamin A (IU)	0%	
Vitamin C (mg)	5.61	9%
Calcium (mg)	95.19	10%
Iron (mg)	1.58	9%

INGREDIENTS:

GARLIC (21.5%), DRIED RED CHILI (19%), LEMONGRASS (18.5%), SHALLOT (14.5%), SALT (13%), GALANGAL (6%), SHRIMP PASTE [SHRIMP (80%), SALT (20%)](4.5%), KAFFIR LIME PEEL (2.5%), PEPPER (0.5%).

ALLERGEN INFORMATION:

CONTAINS SHRIMP. MAY CONTAINS TRACES OF FISH.
SEE ATTACHMENT FOR DETAIL.

Additional Information:

Physical Spec:

APPEARANCE: Thick - Paste
COLOUR: Red - brown
FLAVOUR: Spicy aroma

Chemical Spec:

SALT: (Titration) 12.0 - 14.0
MOISTURE (Moisture balance): 53.0 - 58.0
Aw VALUE (Aw analyzer): ≤ 0.840

Microbiological Spec:

Yeast & Mold: ≤100 cfu / g | E.coli: <3 MPN / g
Bacillus cereus: ≤ 1,000 cfu/g | Clostridium perfringens: ≤ 1,000 cfu/g
Staphylococcus aureus: ND/0.1g | Salmonella spp: ND / 25 gSize

Packaging Materials:

Primary: K-Nylon-LLDPE | Secondary: PE plastic pail

Heavy Metal Spec:

Tin: < 250 ppm | Zinc: < 100 ppm | Copper: < 20 ppm | Lead: < 0.3 ppm
Arsenic: < 2 ppm | Mercury: < 0.02 ppm | Cadmium: < 0.1 ppm

* Percent Daily Values are based on a 2000 calories diet for adults children over 4 years old.

>>Product image/labeling shown on this spec sheet may vary from the actual product in the future.

© 2019 GOLDEN COUNTRY ORIENTAL FOOD LLC.

Mae Ploy® Red Curry Paste Specification

Pesticide Residue complied with Codex MRLs

- Carbamate group
- Organochlorine Group
- Organophosphate Group
- Pyrethroide Group

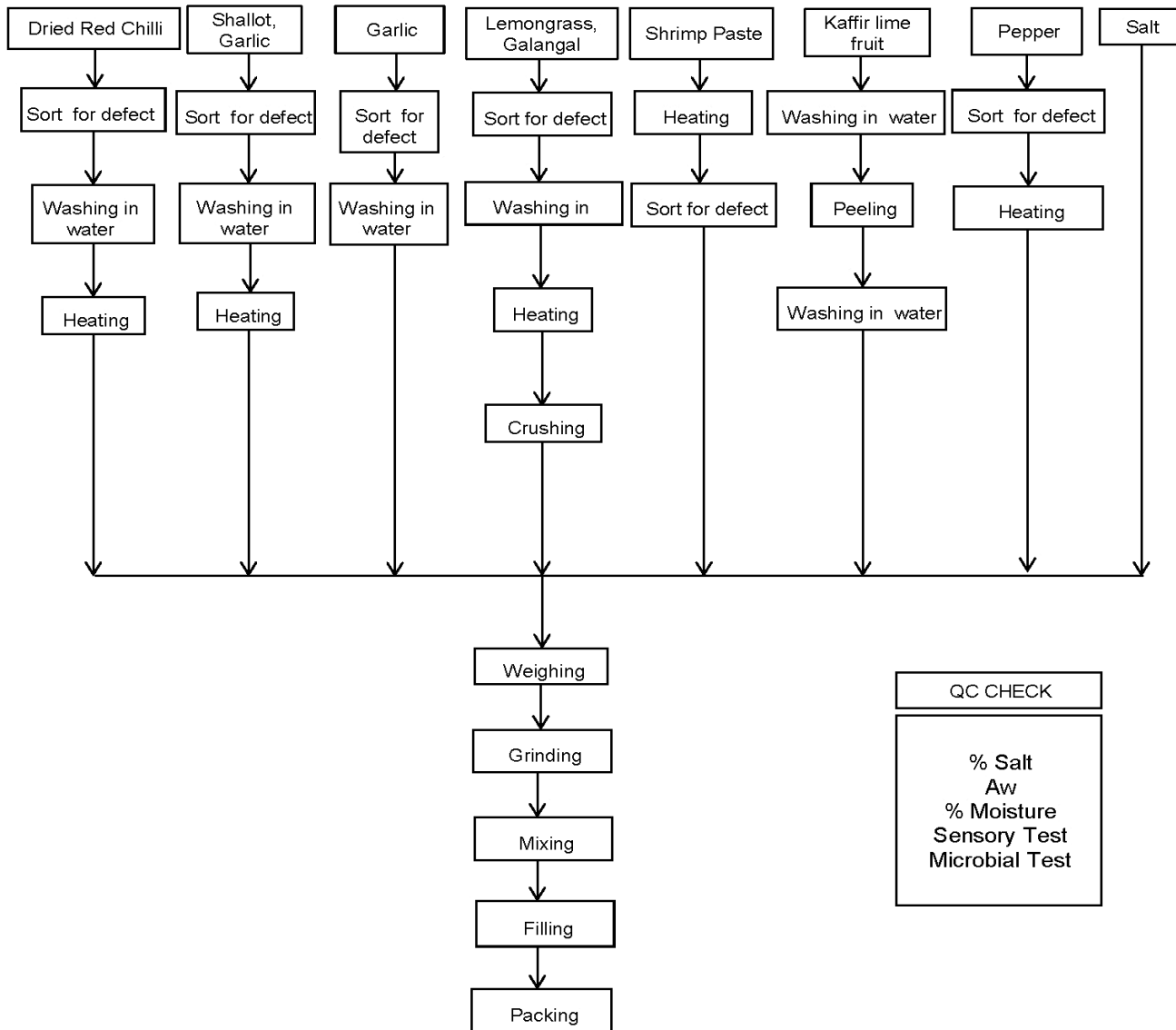
Others:

- Aflatoxin (sum of B1 B2 G1 G2): < 10 ppb
- Aflatoxin (B1): < 5 ppb
- Ochratoxin A: < 15 ppb
- Sudan I-IV: Not Detected

GM Status:

This product does not contain any genetically modified organisms.

Flow Chart:



* Percent Daily Values are based on a 2000 calories diet for adults children over 4 years old.

>>Product image/labeling shown on this spec sheet may vary from the actual product in the future.

ALLERGEN CHECK LIST FOR RED CURRY PASTE

	Column I	Column II	Column III
Component	Present in the product	Present in other products manufactured on the same line	Present in the same manufacturing plant
Milk or its derivatives	No	No	No
Eggs or its derivatives	No	No	No
Fish or its derivatives, e.g., fish protein and extracts etc.	Yes (may contaminated from shrimp paste)	Yes (may contaminated from shrimp paste)	Yes Fish sauce
Crustacean shell fish or its derivatives	Yes (shrimp paste)	Yes (shrimp paste, shrimp)	Yes (shrimp paste, shrimp)
Tree nut (almonds, Brazil nuts, cashews, hazelnuts(filberts), macadamia nuts, pecans, pine nuts (pinyon, pinon), pistachios and walnutsor their derivatives	No	No	No
Peanut or its derivatives	No	No	Yes
Cereals containing gluten e.g. wheat or its derivatives	No	No	Yes (wheat from soysauce)
soy bean or its derivatives	No	Yes (fermented soy paste)	Yes (fermented soy paste ,HVP,soysauce)
Sulfurdioxide and Sulphite (≥ 10 ppm)	No	No	Yes
sesame seeds or its derivatives	No	No	No
Mustard / Mustard seeds or its derivatives	No	Yes (Black Mustard Seeds)	Yes (Black Mustard Seeds)
Lupin or its derivatives	No	No	No
celery or its derivatives	No	No	No
beef or its derivatives	No	No	No
pork or its derivatives	No	No	No
chicken or its derivatives	No	No	Yes
royal jelly or its derivatives	No	No	No
bee pollen or propolis	No	No	No
gelatine eg. bee pollen, propolis or its derivatives	No	No	No
buck wheat or its derivatives	No	No	No
matsutake or its derivatives	No	No	No
oranges or its derivatives	No	No	No
kiwi or its derivatives	No	No	No
peachs or its derivatives	No	No	No
apples or its derivatives	No	No	No
yamanoimo (yams) or its derivatives	No	No	Yes
bananas or its derivatives	No	No	No
Coconut or its derivatives	No	Yes (coconut sugar)	Yes (coconut gel, coconut sugar)
Mango or its derivatives	No	No	Yes (mango in syrup)
Tomato or its derivatives	No	No	Yes